



North Park Region Advisory Council

Back Creek Park Planning Study
Back Creek Greenway Planning Study
Doby Creek Greenway Planning Study

Public Meeting: August 2, 2022

North Park Region Presentation



Mecklenburg County
Park and Recreation



- **Planning Studies Team Introductions**
- **Current Projects**
- **Future Projects**
 - Capital Planning Studies:
 1. Back Creek Park
 2. Back Creek Greenway
 3. Doby Creek and Doby Creek Tributary Greenways
 - Next CIP FY2024-2028
- **Questions and Breakout Sessions**

Planning Studies Team:



Mecklenburg County
Park and Recreation

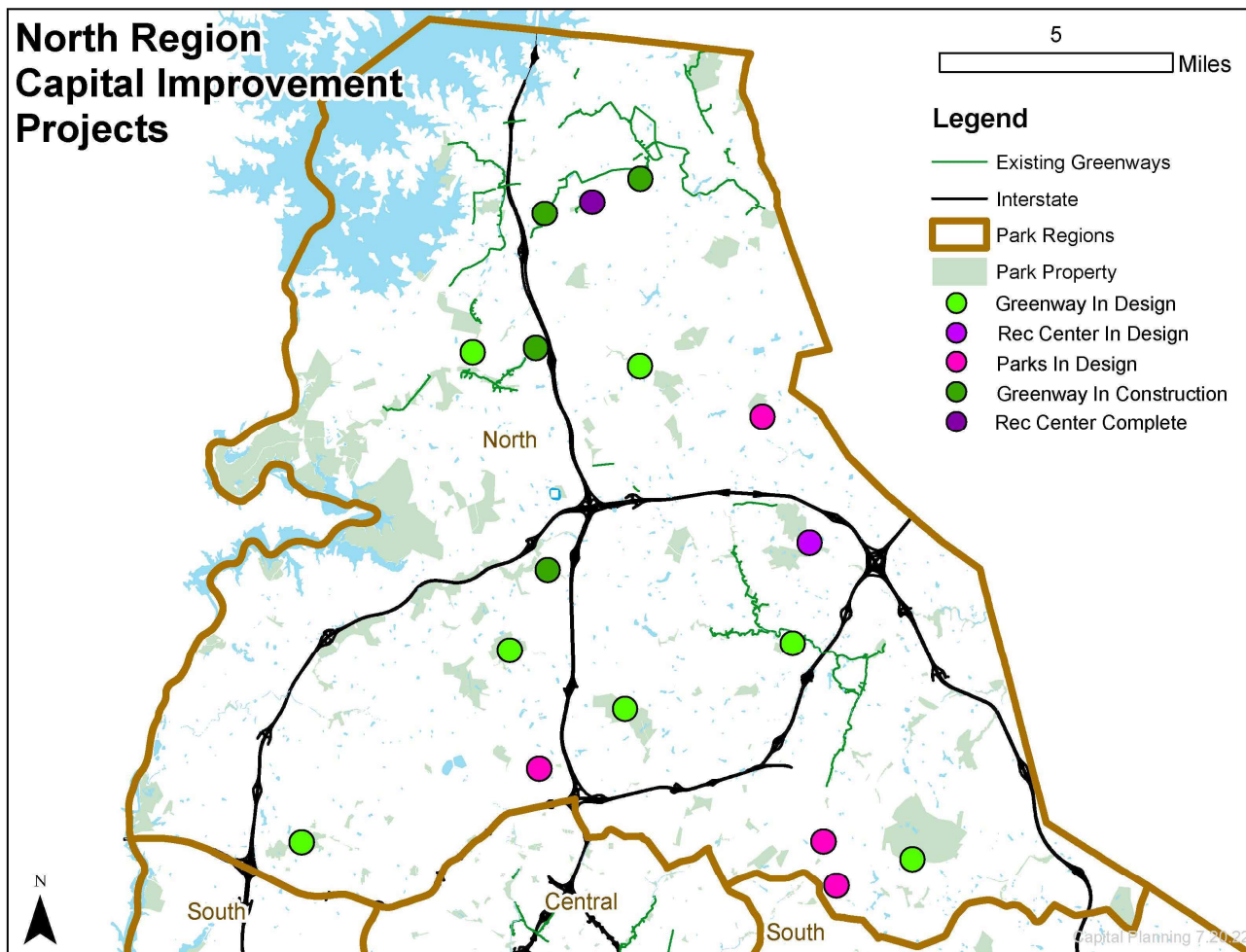


- Capital Planning, Mecklenburg County Park and Recreation
 - Joyce Figueroa, Planner
 - Katie Daughtry, Planner
- Back Creek Park & Greenway Planning Studies
 - Dan Blackman, Stimmel
- Doby Creek Greenway Planning Study
 - Andrew Hickling, McAdams

North Park Region: Current Projects



Mecklenburg County
Park and Recreation



North Park Region: Current Projects



Mecklenburg County
Park and Recreation



In Planning/Design:

- Eastfield Regional Park
- Devonshire Park
- Fred Alexander Park
- Viewmont Park
- **Mallard Creek Recreation Center**

- Irwin Creek Greenway
- **Mallard Creek Greenway**
- McIntyre Creek Greenway
- Paw Creek Greenway
- **Reedy Creek Greenway**
- South Prong Clarke Creek Greenway

In Construction / Completed:

- Caldwell Station Tributary Greenway
- Long Creek Greenway
- McDowell Creek Greenway
- Northern Regional Recreation Center
- Plum Creek Greenway Extension
- Torrence Creek Tributary #2 Greenway

Planning Studies:



Mecklenburg County
Park and Recreation



DOES:

- Help inform alignment and constructability of a future trail or park for planning purposes.
- Analyze existing site conditions
- Identify areas of opportunity & areas with constraints
- Identify potential land needs
- Welcome public input on potential park amenities and area needs
- Compare potential elements to the existing facilities in the area
- Objectively assess the practicality of potential program elements
- Utilize responsible design and planning methods
- Help determine the project cost and value for future budgeting

DOES NOT:

- **Include funding for design or construction**
- **Guaranty it will receive Capital Improvement Funding in the foreseeable future.**

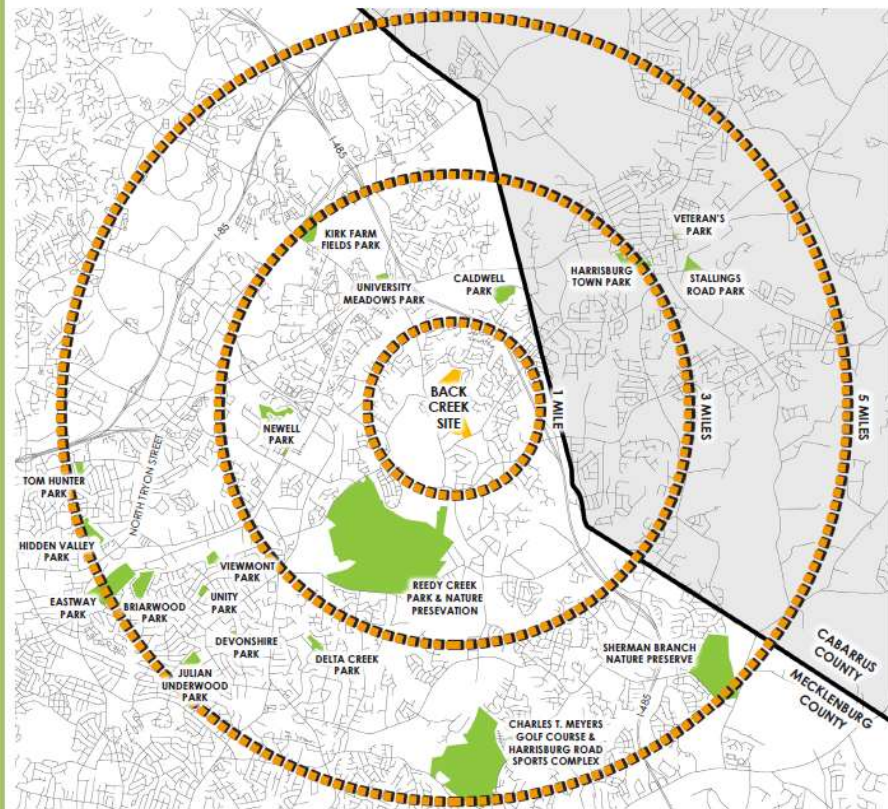
Planning Study: Back Creek Park



Mecklenburg County
Park and Recreation



SURROUNDING AREA PARKS...



SURROUNDING PARKS		LAND AREA (ACRES)	PLAYGROUND	PICNIC SHEET	MULTIPURPOSE FIELD	NATURE PRESERVE	NATURE PROGRAM CENTER	SAND VOLLEYBALL	BASEBALL / SOFTBALL	BASKETBALL COURT	PAVILION	BEACH POOL	DISC GOLF COURSE	COMMUNITY GARDEN	BOUNCE / PICKLE COURT	DOG PARK	BIKE / WALKING TRAILS	OPENWAY TRAILS
BRIARWOOD PARK	33.2																	
CALDWELL PARK	28.9																	
CHARLES T. MEYERS GOLF COURSE	310																	
DELTA CREEK PARK	10.8																	
DEVONSHIRE PARK	1.5																	
EASTWAY PARK	90.4																	
HARRISBURG ROAD PARK	0.9																	
HARRISBURG ROAD SPORTSPLEX	106																	
HARRISBURG TOWN PARK (TOWN OF HARRISBURG)	24.7																	
HIDDEN VALLEY PARK	19.9																	
JULIAN UNDERWOOD PARK	13.5																	
KIRK FARM FIELD PARK	35.5																	
NEWELL PARK	31.6																	
REEDY CREEK PARK	209																	
REEDY CREEK NATURE PRESERVE	477																	
SHERMAN BRANCH NATURE PRESERVE	210																	
STALLINGS ROAD PARK (TOWN OF HARRISBURG)	12.7																	
TOM HUNTER PARK	8.4																	
UNITY PARK	5.3																	
UNIVERSITY MEADOWS PARK	6.1																	
VETERAN'S PARK (TOWN OF HARRISBURG)	1																	
VIEWMONT PARK	11																	
TOTAL SURROUNDING PARK AREA: 1947																		

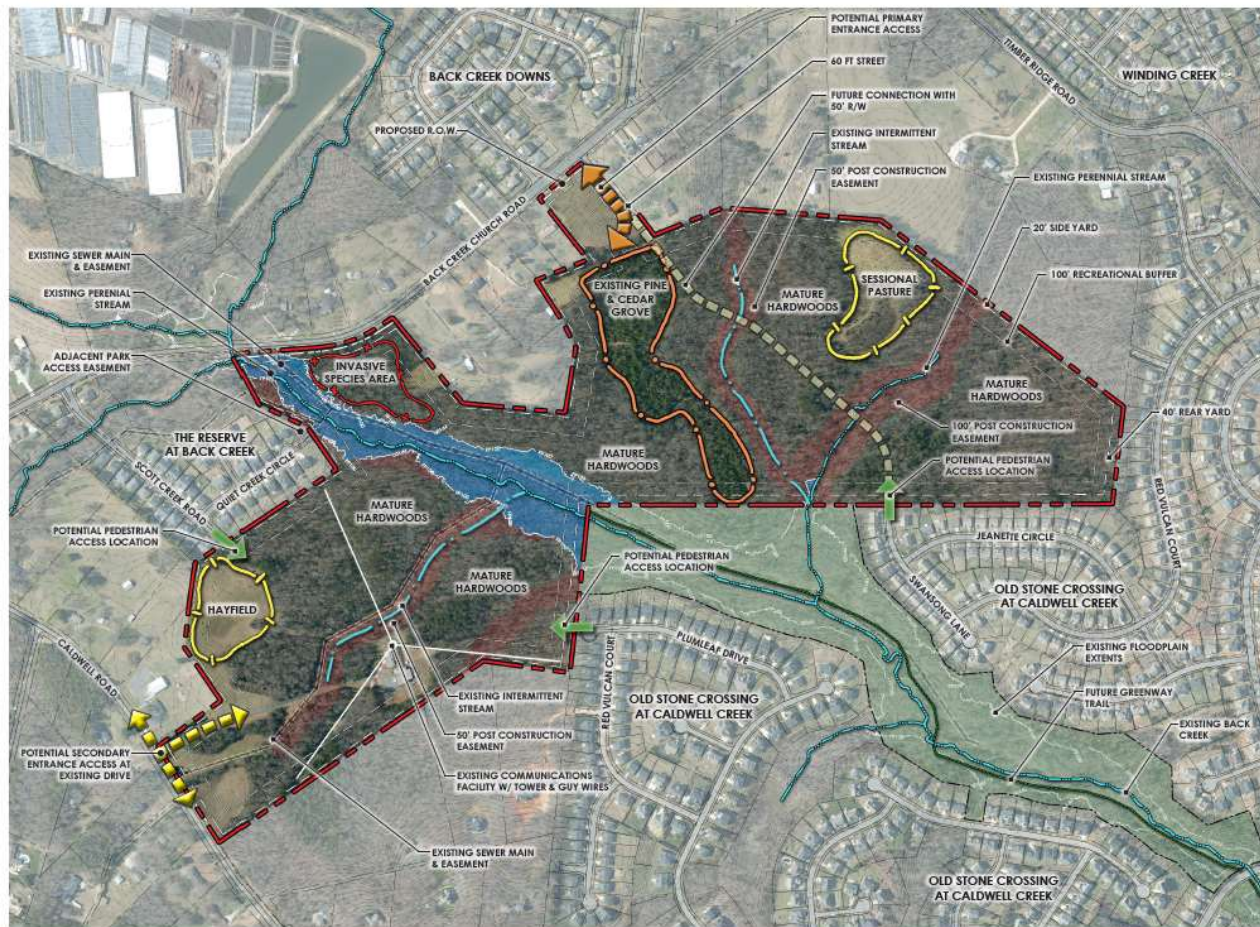
BACK CREEK PARK

- No existing parks within 1 mile of project
- MOST provided activities within 5 miles:
 - Picnic Areas
 - Playgrounds
 - Multi-Purpose & Baseball / Softball Fields
 - Bike & Walking Trails
- LEAST provided activities within 5 miles:
 - Splash Pad
 - Recreation Center / Nature Center
 - Dog Park
 - Greenway Trails
 - Disc Golf Course

Planning Study: Back Creek Park



Mecklenburg County
Park and Recreation

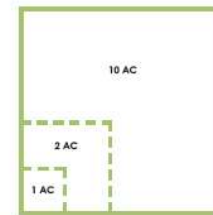


SITE DATA:

GIS Parcel IDs:	051-19-113, 051-20-104, 051-19-107, & 051-19-128
Total Site Area:	124.85 AC
Municipality:	City Of Charlotte
Zoned:	R-3
Water Quality Buffer:	50' & 100' PCSO
Pool Construction District:	Yadkin Southeast Catowba
Stream Watershed:	Catawba
Open Space:	15% Min.
Required:	
Building Setbacks:	
Front Setback:	30'
Side Yard:	20'
Rear Yard:	45'
Recreational Buffer:	100'

NOTES:

- Existing Sanitary Sewer Easements shown on site are referenced from as-built documents provided by Charlotte Water.
- Future Greenway alignment shown on the plan provided by Mecklenburg County GIS.
- Streams and stream buffer framework provided by Mecklenburg County GIS. Stream labels per USGS classification.
- Major Communications tower and guy wires shown on aerial image.
- Future Road alignment through the site provided from Charlotte Engineer's Charlotte Department of Transportation layers.



BACK CREEK PARK | **SITE ANALYSIS MAP**



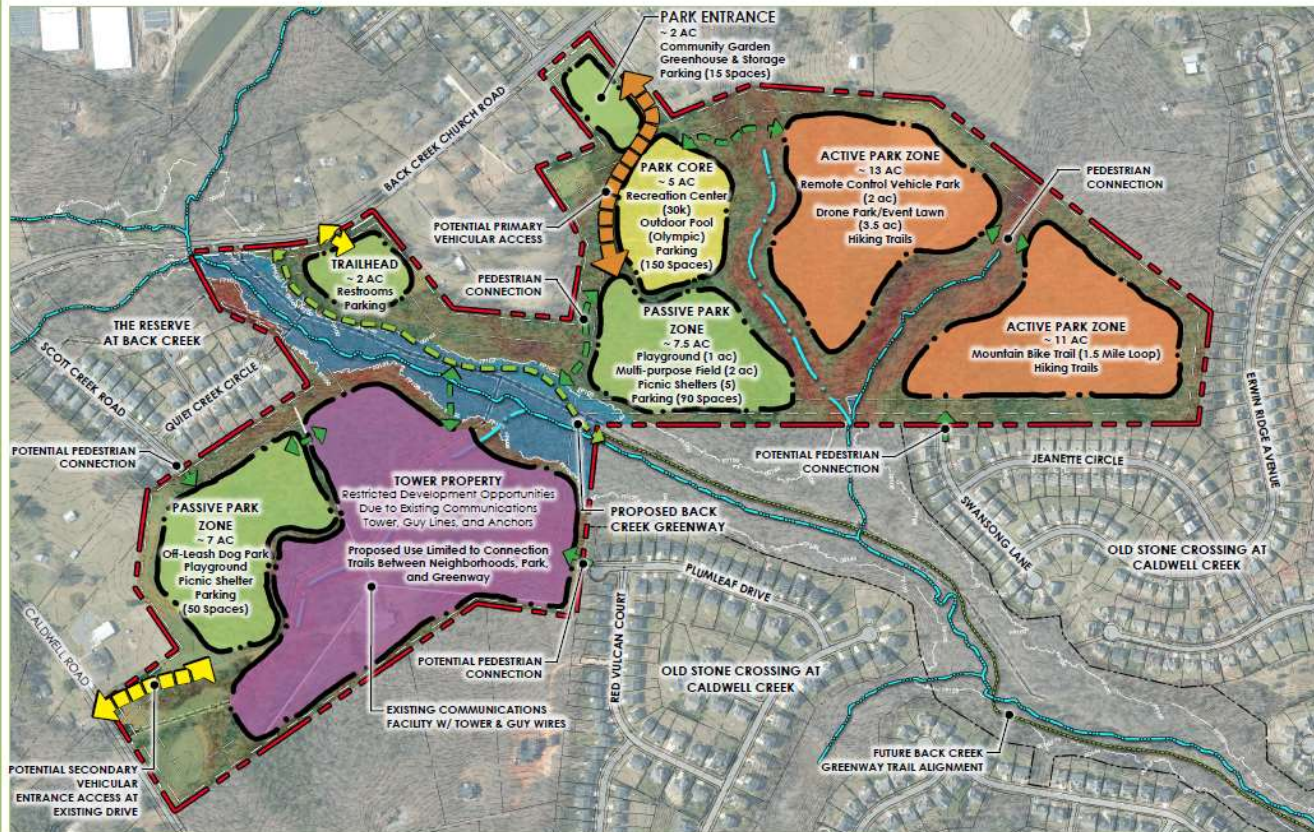
Planning Study: Back Creek Park



Mecklenburg County
Park and Recreation



FEASIBILITY STUDY...



BACK CREEK PARK

Planning Study: Back Creek Park



Mecklenburg County
Park and Recreation



DOG PARK

OPEN LAWN / AMPHITHEATER

MULTI-PURPOSE FIELDS

COMMUNITY GARDENS

NATURE CENTER

PASSIVE RECREATION IS...
Outdoor Activities that take place within Natural and Minimally Developed Spaces.

PLAYGROUNDS

PAVED WALKING & BIKE TRAILS

SHELTERS & PICNIC AREAS

NATURAL SURFACE TRAILS

DRONE PARK

Planning Study: Back Creek Park



Mecklenburg County
Park and Recreation

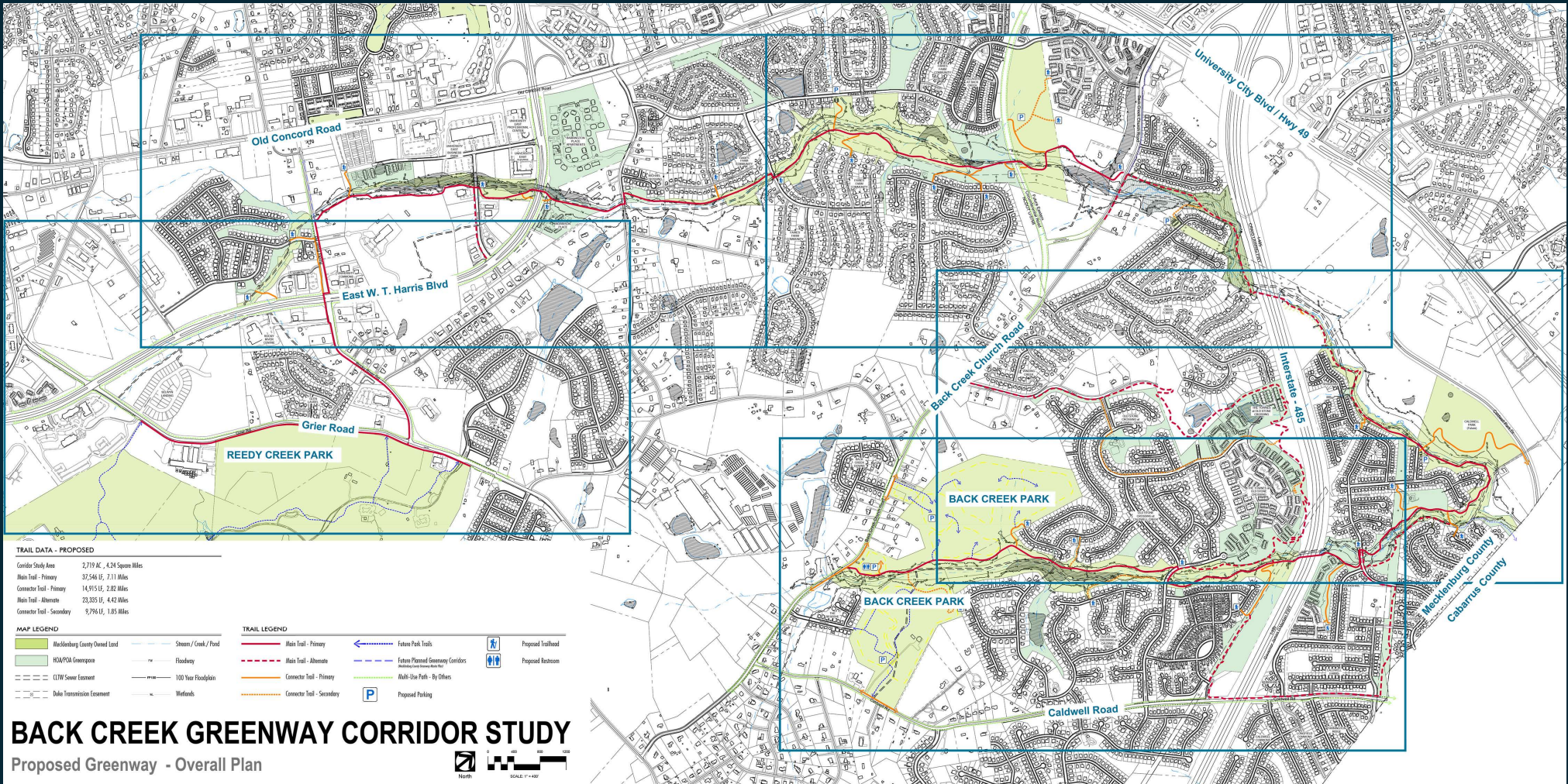


ACTIVE RECREATION IS...
Outdoor Activities that require specific Facilities for play such as Fields, Courts, and other highly developed spaces.

Planning Study: Back Creek Greenway



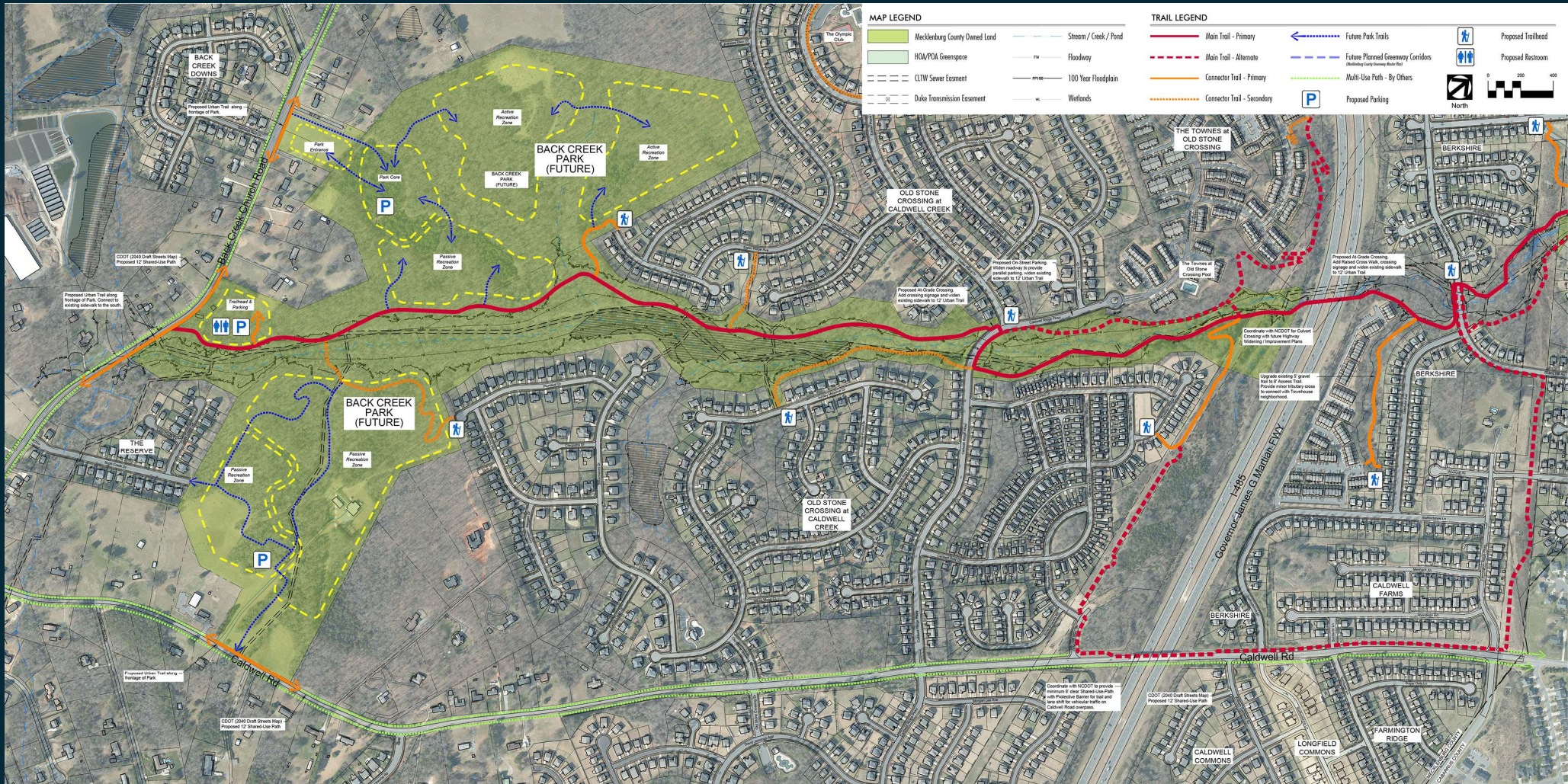
Mecklenburg County
Park and Recreation



Planning Study: Back Creek Greenway



Mecklenburg County
Park and Recreation



Planning Study: Back Creek Greenway



Mecklenburg County
Park and Recreation



Planning Study: Back Creek Greenway



Mecklenburg County
Park and Recreation



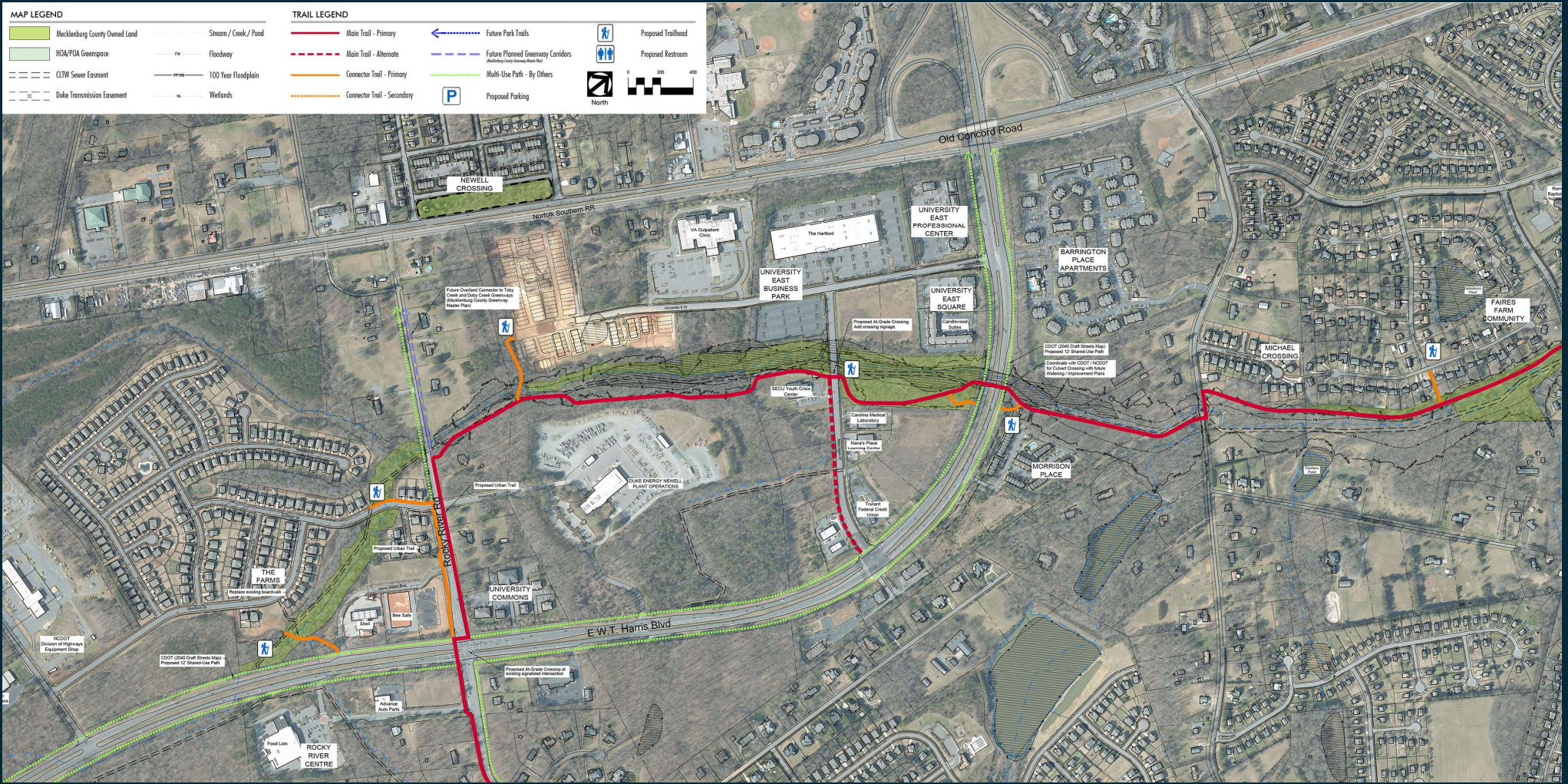
Planning Study: Back Creek Greenway



Mecklenburg County
Park and Recreation



MAP LEGEND		TRAIL LEGEND	
Mecklenburg County Owned Land	Stream / Creek / Pond	Main Trail - Primary	Future Park Trails
HOA/POA Greenspace	Floodway	Main Trail - Alternate	Future Planned Greenway Corridors
CLTW Sewer Easement	100 Year Floodplain	Connector Trail - Primary	Multi-Use Path - By Others
Duke Transmission Easement	Wetlands	Connector Trail - Secondary	Proposed Parking
		Proposed Trailhead	Proposed Restroom
		North	0 200 400



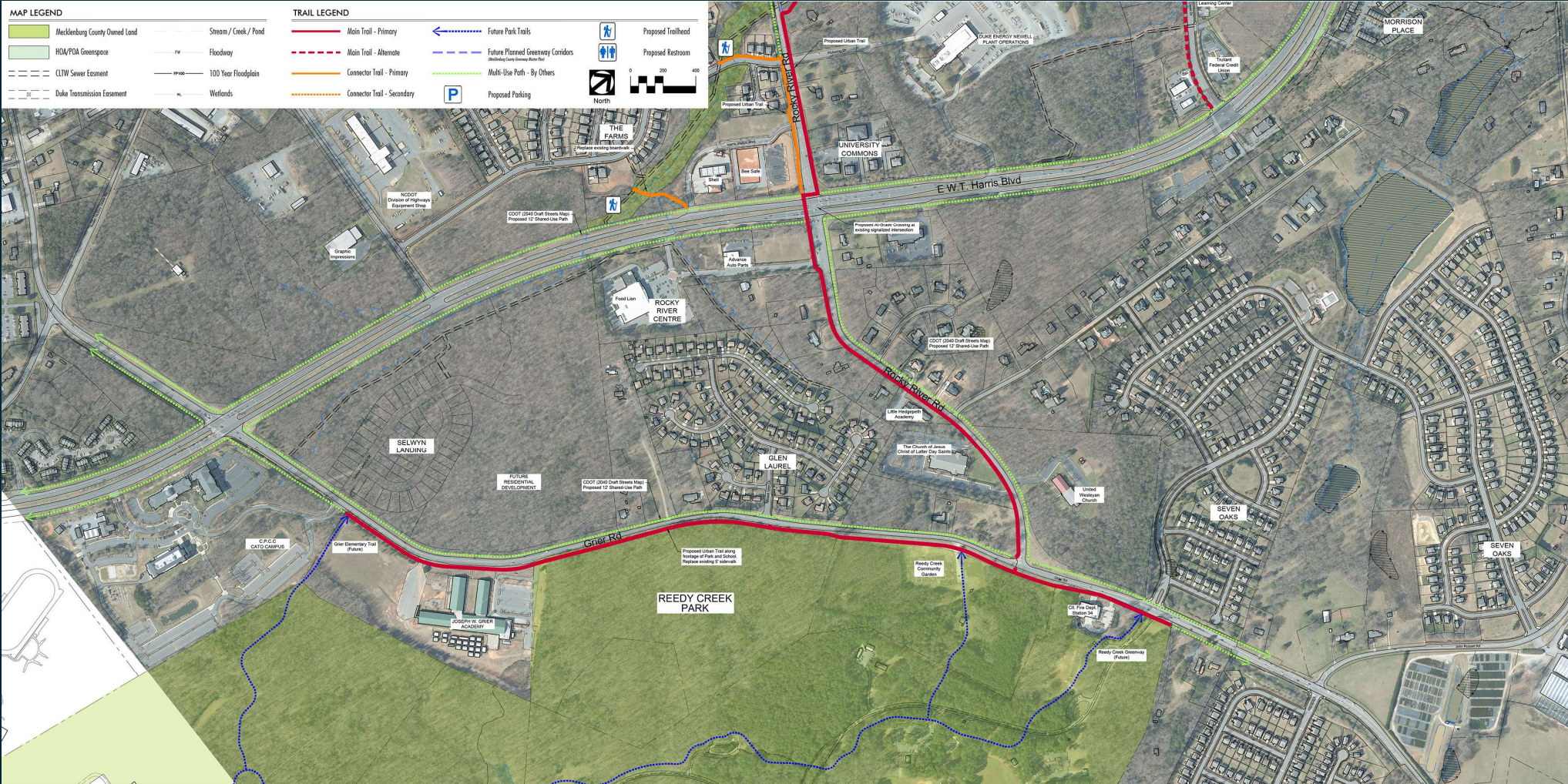
Planning Study: Back Creek Greenway



Mecklenburg County
Park and Recreation



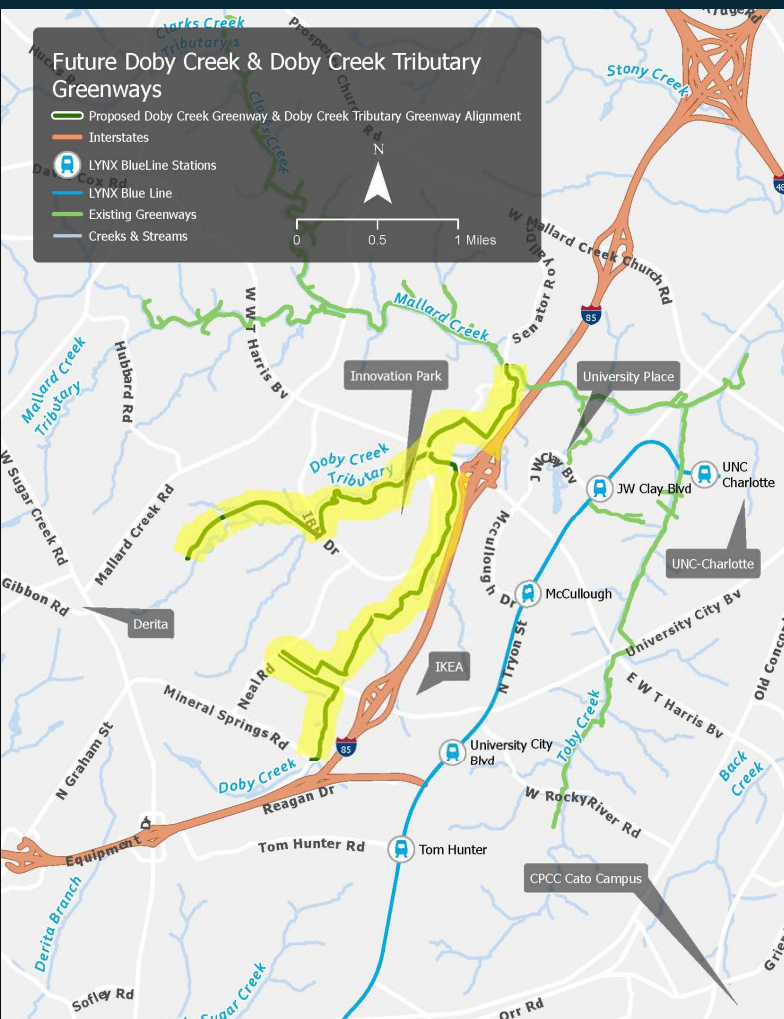
MAP LEGEND		TRAIL LEGEND	
	Mecklenburg County Owned Land		Main Trail - Primary
	HQA/PDA Greenspace		Main Trail - Alternate
	CLW Sewer Easement		Connector Trail - Primary
	Duke Transmission Easement		Connector Trail - Secondary
	Stream / Creek / Pond		Future Park Trails
	FW Floodway		Future Planned Greenway Corridors
	100 Year Floodplain		Multi-Use Path - By Others
	Wetlands		Proposed Restroom
			Proposed Trailhead
			Proposed Parking



Planning Study: Doby Creek & Doby Creek Tributary Greenways



Mecklenburg County
Park and Recreation



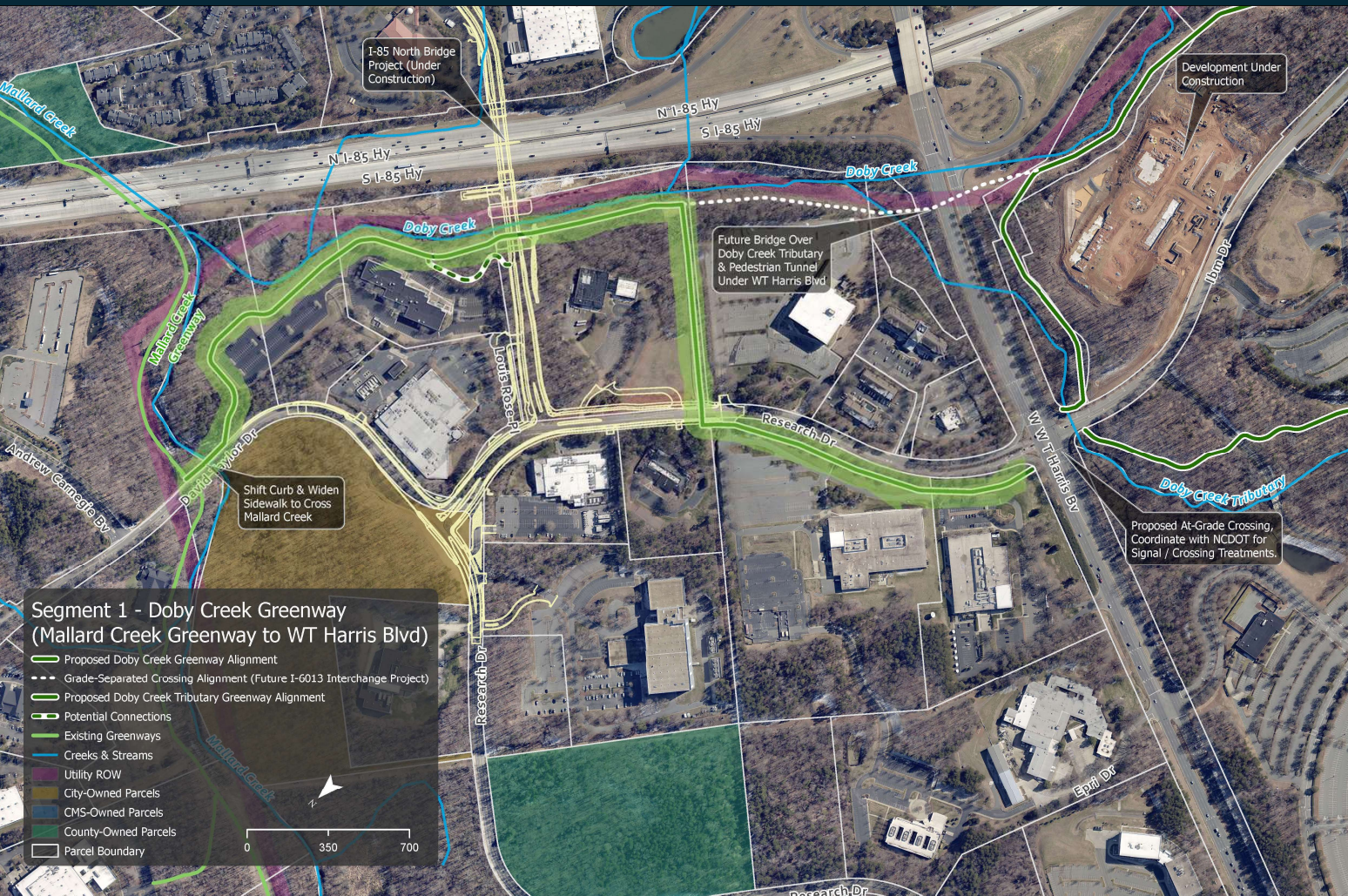
Study Area: University Research Park / Innovation Park

- Doby Creek Greenway: ~3.8 miles from Mallard Creek to Mineral Springs Road
- Doby Creek Tributary Greenway: ~2.2 miles from WT Harris Blvd to Nevin Road
- Many development/re-development projects planned or under construction in the study area.

Planning Study: Doby Creek Greenway



Mecklenburg County
Park and Recreation

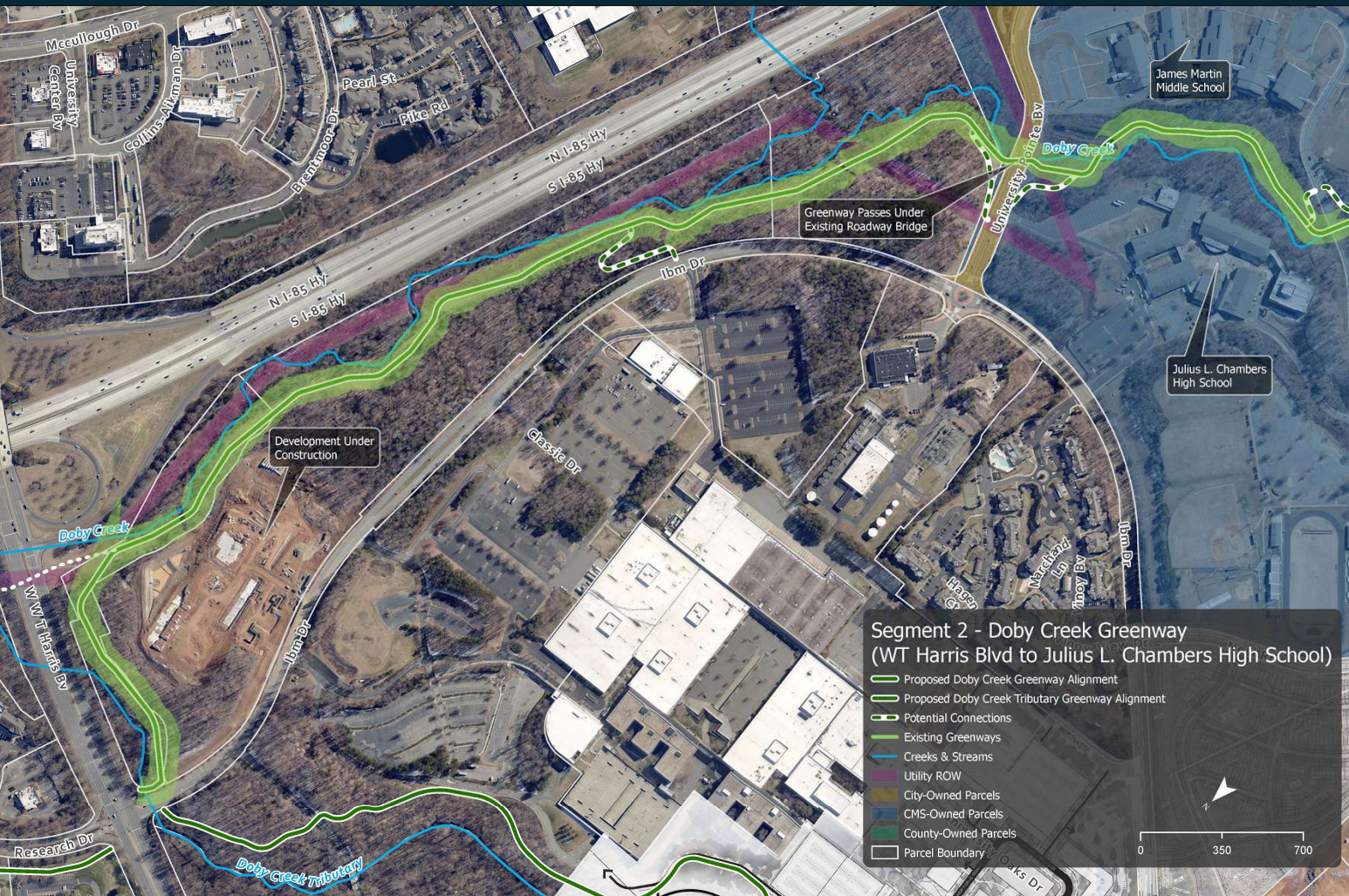


- Connect to the existing greenway network (Mallard Creek, Clarks Creek, Toby Creek, Barton Creek)
- Connect to City Bridge Project over I-85
- Install crosswalk + pedestrian signals at WT Harris Blvd intersection

Planning Study: Doby Creek Greenway



Mecklenburg County
Park and Recreation



- Utilize existing sewer easement
- Connect to IBM Dr, University Pointe Dr
- Pass below existing University Pointe Dr bridge

Planning Study: Doby Creek Greenway



Mecklenburg County
Park and Recreation



- Connect to school entrance drive
- Pass below existing school entrance drive bridge
- Utilize existing pedestrian signal to cross University City Blvd at Neal Rd intersection

Planning Study: Doby Creek Greenway



Mecklenburg County
Park and Recreation

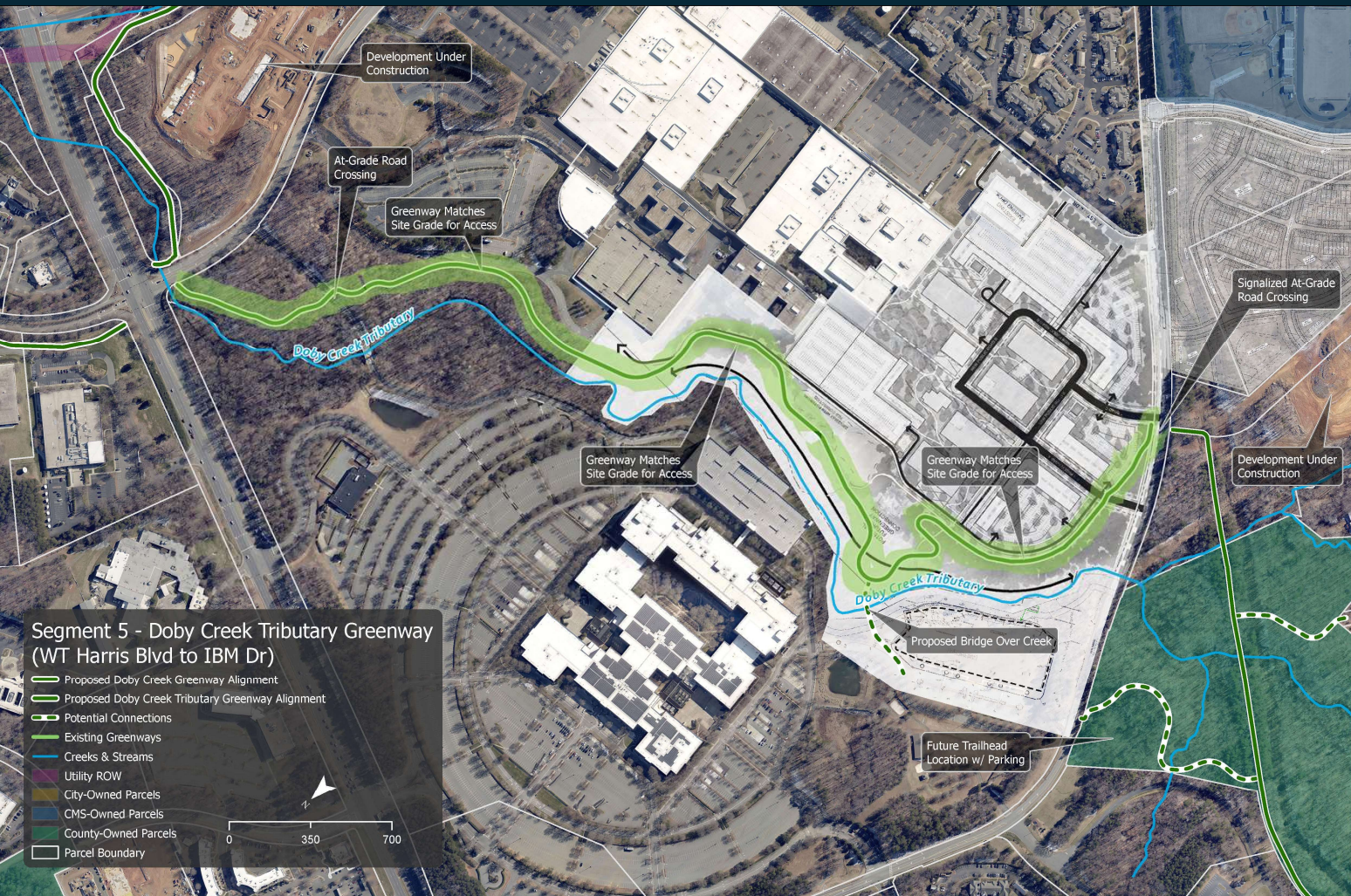


- Coordinate with multi-family developments
- Connect to Doby Springs Dr
- End at Mineral Springs Rd

Planning Study: Doby Creek Tributary Greenway



Mecklenburg County
Park and Recreation



- Connect to Innovation Park Re-Development and Wells Fargo
- Install crosswalk + pedestrian signals at IBM Dr intersection

Planning Study: Doby Creek Tributary Greenway



Mecklenburg County
Park and Recreation



- Greenway follows existing railbed
- Connect to Clooney Ln and to Future Trailhead on IBM Dr
- End at Nevin Rd

Next Steps?



Mecklenburg County
Park and Recreation



- Public Input and the Planning Studies will help determine & inform:
 - Budget
 - Land Acquisition Needs
- To be considered for Future CIP Funding Programs
- For more information and to provide additional input:
 - <https://publicinput.com/DobyCreekGreenwayStudy>
 - <https://publicinput.com/BackCreekParkStudy>
 - <https://publicinput.com/BackCreekGreenwayStudy>

Meck Playbook

Mecklenburg County Park & Recreation
2020 Master Plan

Visit MeckPlaybook.com for more information about the Master Plan.

FY2024-2028: Capital Improvement Plan



Mecklenburg County
Park and Recreation



FY 2024-2028 Capital Improvement Plan

We want your input!

Join us at a Public Meeting:

6/24 Northern Regional Recreation Center 9:00-5:00
18121 Old Statesville Rd, Cornelius, NC 28031

7/7 President James K. Polk State Historic Site: 9:00-5:00
12031 Lancaster Hwy, Pineville, NC 28134

7/28 Eastway Regional Recreation Center: 10:30-6:30
3150 Eastway Park Drive, Charlotte, NC 28213

8/11 Bette Rae Thomas Recreation Center: 10:30-6:30
2921 Tuckaseegee Rd, Charlotte, NC 28208



Got an idea for
Park and Rec?

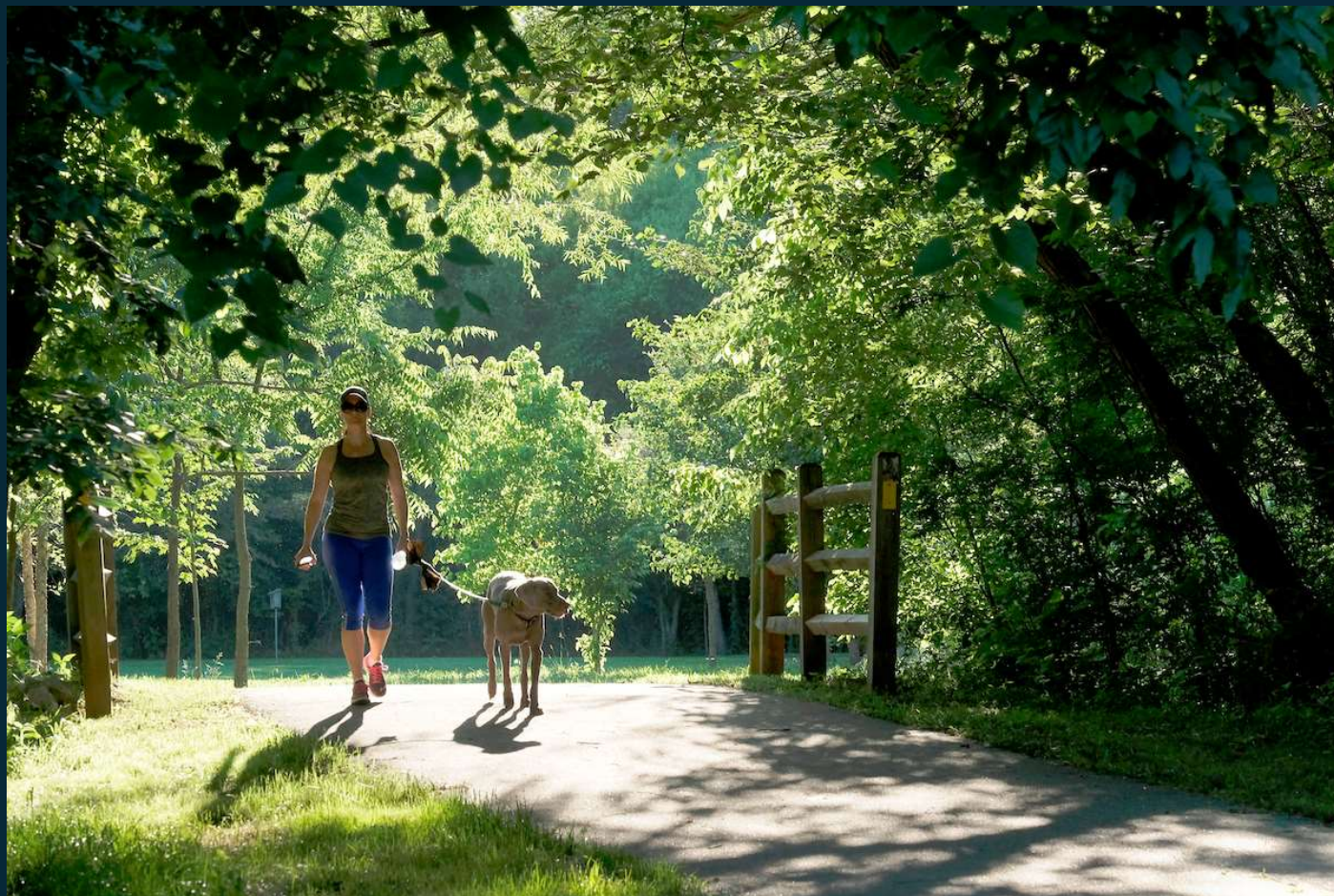


www.publicinput.com/24CIP

Questions and Breakout Sessions



Mecklenburg County
Park and Recreation



Planning Studies:

- Back Creek Park
- Back Creek Greenway
- Doby Creek and Doby Creek Tributary Greenways

Photo from Torrence
Creek Greenway

A photograph of two children walking away from the camera on a paved path. The child on the left is wearing a blue shirt and red shorts. The child on the right is wearing a red shirt and grey shorts. The path is covered with fallen leaves, and there are trees and grass in the background.

Thank you!

Contact:

Katie Daughtry

Planner, Capital Planning

980-406-1504

katie.daughtry@mecklenburgcountync.gov

Joyce Figueroa

Planner, Capital Planning

980-314-1055

Joyce.Figueroa@Mecklenburgcountync.gov